



KEIM COLOURWASH

Interior paint for creating a limewash aesthetic without the hassle of traditional limewash.

The easiest way to create limewashed walls

Suitable for bare and previously painted walls and ceilings, create a timeless aesthetic in as little as one coat of KEIM Colourwash BASE and one application KEIM Colourwash in one of our curated shades. No art degree necessary.

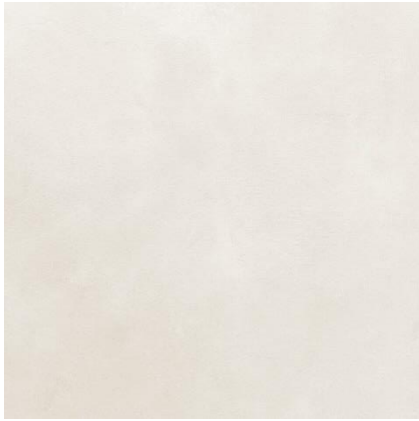
Like limewash, but better

Colourwash is a non-caustic alternative to traditional limewash. Its unique composition combines non-flammable ingredients, UV-stable natural pigments, and a potassium silicate binder for a durable, chalk-free finish that sets Colourwash apart from conventional lime-based paints and washes.

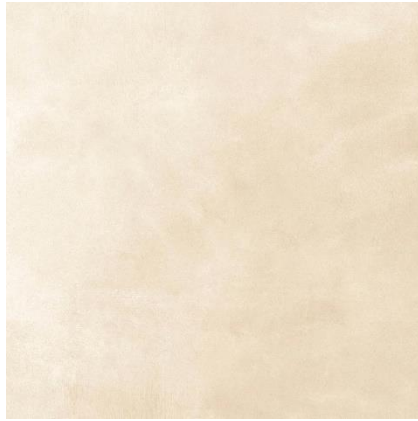
- Suitable for bare and previously painted walls/ceilings
- Chemically bonds to the substrate or mechanically to existing paint
- Highly breathable (0.01m sd Value)
- Ultra-low VOC (<1g/l)
- Eco & user friendly
- Vegan

KEIM COLOURWASH

CURATED COLOUR RANGE



SALT



KNIT



BEAR



ROOT



MYTH



TALC



TUSK



BALM



TEXTURED
UNDERCOAT

KEIM COLOURWASH BASE

TECHNICAL INFORMATION

PRODUCT DESCRIPTION

KEIM Colourwash BASE is an opaque white sol-silicate paint for interior use according to DIN EN 13 300.

FIELD OF APPLICATION

KEIM Colourwash BASE is suitable for bare and previously painted interior wall and ceilings. For application onto bare lime plaster, use KEIM Colourwash Lime Primer first. Not suitable for plastic, wood or metal.

SURFACE PREPARATION

Abrade gloss/sheen finishes with sandpaper to create a key. Repair/fill with only mineral-based materials (such as KEIM Dolomitspachtel) and allow 1 day per millimetre thickness drying time. New lime plaster should be allowed a minimum period of 28 days to dry and a coat of KEIM Colourwash Lime Primer 12 hours before painting. Ensure surfaces are clean, sound and dry.

APPLICATION

Stir contents thoroughly before application. Apply a single, undiluted coat of KEIM Colourwash BASE by brush or roller. Allow a minimum period of 12 hours before overcoating with KEIM Colourwash.

PROPERTIES & CLASSIFICATION

Highly vapour permeability
Anti-fungal and anti-algae
No solvents, plasticisers or preservatives
Very Low odour
Non-flammable (Class A2-s1, d0 as per EN 13501-1)
Approx. 1.4 - 1.6 g/cm³ density
< 5% organic content
Approx. 11 pH value
≤ 0.01m Diffusion-equivalent air layer thickness (sd Value)
Class 1 wet abrasion resistance
Class 1 contrast ratio covering power
Flat matt finish
UV stable
Fine maximum particle size

COMPOSITION

Silicate and calcite fillers, titanium dioxide, silica sol, water, polyacrylate, hydrophobing agents, thickeners, stabilisers, wetting agents, defoamers. Origin of mineral fillers: Germany and/or Austria.

APPLICATION CONDITIONS

Ambient and surface temperature must be 5-30°C during application and drying. Protect surfaces not to be painted. Any splashes must be rinsed off immediately with plenty of water. Clean tools immediately with water.

CONSUMPTION

0.125l/m² for a single coat onto smooth surfaces

PACKAGING

1lt & 5lt containers

STORAGE

Maximum 12 months when stored airtight in a frost-free environment. Protect from heat and direct sun.

DISPOSAL

For disposal information refer to Section 13 of the Material Safety Data Sheet. EC Waste Code: 08 01 12

SAFETY INSTRUCTIONS

Please, refer to the Material Safety Data Sheet

DISCLAIMER

The stated values and properties are the result of extensive development work and practical experience. Our recommendations for application, whether given verbally or in writing, are intended to assist in the selection of our products and do not establish a contractual relationship. They do not release the purchaser and processor from the obligation to convince themselves of the suitability of our products for the intended application with due care, which is general practice in trade and crafts. The general rules of construction technology must be observed. We reserve the right to make modifications to improve the product or its application

KEIM COLOURWASH

TECHNICAL INFORMATION

PRODUCT DESCRIPTION

KEIM Colourwash is a translucent paint for interior decorative finishes.

FIELD OF APPLICATION

KEIM Colourwash should be applied over KEIM Colourwash BASE, or onto bare mineral substrates to retain their existing characteristics.

SURFACE PREPARATION

Allow 12 hours minimum following the application of KEIM Colourwash BASE before proceeding.

APPLICATION

For application onto unpainted substrates to retain their existing characteristics, or over KEIM Colourwash BASE. Stir contents thoroughly before and throughout application to prevent separation. Apply KEIM Colourwash using a wide, soft bristle brush (such as the KEIM Oval Brush), use light pressure and create overlapping crosshatch or "X" motions, maintaining a wet edge until reaching a natural breakline. Lightly use a clean and dry brush to soften obvious brush marks, if required. Although tempting, avoid touching up – the colour will equalise as the surface dries. The number of coats applied is personal preference, allow 12 hours between each coat and mix thoroughly before each application.

PROPERTIES & CLASSIFICATION

Highly vapour permeability
Anti-fungal and anti-algae
No solvents, plasticisers or preservatives
Very Low odour
Non-flammable
Approx. 1.1 - 1.3 g/cm³
< 5% organic content
Approx. 11 pH value
≤ 0.01m Diffusion-equivalent air layer thickness (sd Value)
Flat matt finish
UV stable
Fine maximum particle size

COMPOSITION

Mineral fillers, potassium water glass, silica sol, acrylate dispersion, liquid solution from silicic acid potassium salt and organic additives. Origin of mineral fillers: Germany and/or Austria.

APPLICATION CONDITIONS

Ambient and surface temperature must be 5-30°C during application and drying. Protect surfaces not to be painted. Any splashes must be rinsed off immediately with plenty of water. Clean tools immediately with water.

CONSUMPTION

0.15lt/m² for a single coat onto smooth surfaces

PACKAGING

1lt, 2.5lt & 5lt containers

STORAGE

Use within 2 months of receipt. Store airtight and in a frost-free environment. Protect from heat and direct sun.

DISPOSAL

For disposal information refer to Section 13 of the Material Safety Data Sheet. EC Waste Code: 08 01 12 / 06 02 99.

SAFETY INSTRUCTIONS

Please, refer to the Material Safety Data Sheet.

DISCLAIMER

The stated values and properties are the result of extensive development work and practical experience. Our recommendations for application, whether given verbally or in writing, are intended to assist in the selection of our products and do not establish a contractual relationship. They do not release the purchaser and processor from the obligation to convince themselves of the suitability of our products for the intended application with due care, which is general practice in trade and crafts. The general rules of construction technology must be observed. We reserve the right to make modifications to improve the product or its application.

KEIM MINERAL PAINTS LTD

Santok Building, Deer Park Way, Donnington Wood, Telford, Shropshire, TF2 7NA
01952 231250 | sales@keimpaints.co.uk

